



THE CAMERON

EXPLORE THE WORLD OF CONCRETE HOMES

USA is dedicated to creating beautifully and creatively designed, sustainable, energy efficient, affordable, durable, and safe homes that give many more Americans a shot at homeownership. Inspired by extensive architectural and engineering work, our goal is to provide buildings that are more than houses – our concrete insulated homes are designed to be homes that will last decades with minimal maintenance and make homeownership more affordable. These homes are modern yet timeless.

COMFORT AND COMMUNITY

A lovely contemporary design, The Cameron offers a unique inverted layout in a midsize package! It has 2,300 square feet with two bedrooms and three bathrooms, so it checks the boxes for an empty nester, retired couple, or smaller family. The home includes a two-car garage, the foyer, a glass wine cellar, a billiards area, and a laundry room that connects to the garage and a flex room. The flex room would make a nice quiet office and/or storage closet away from the hustle and bustle of the household!



THE CAMERON INTERIORS

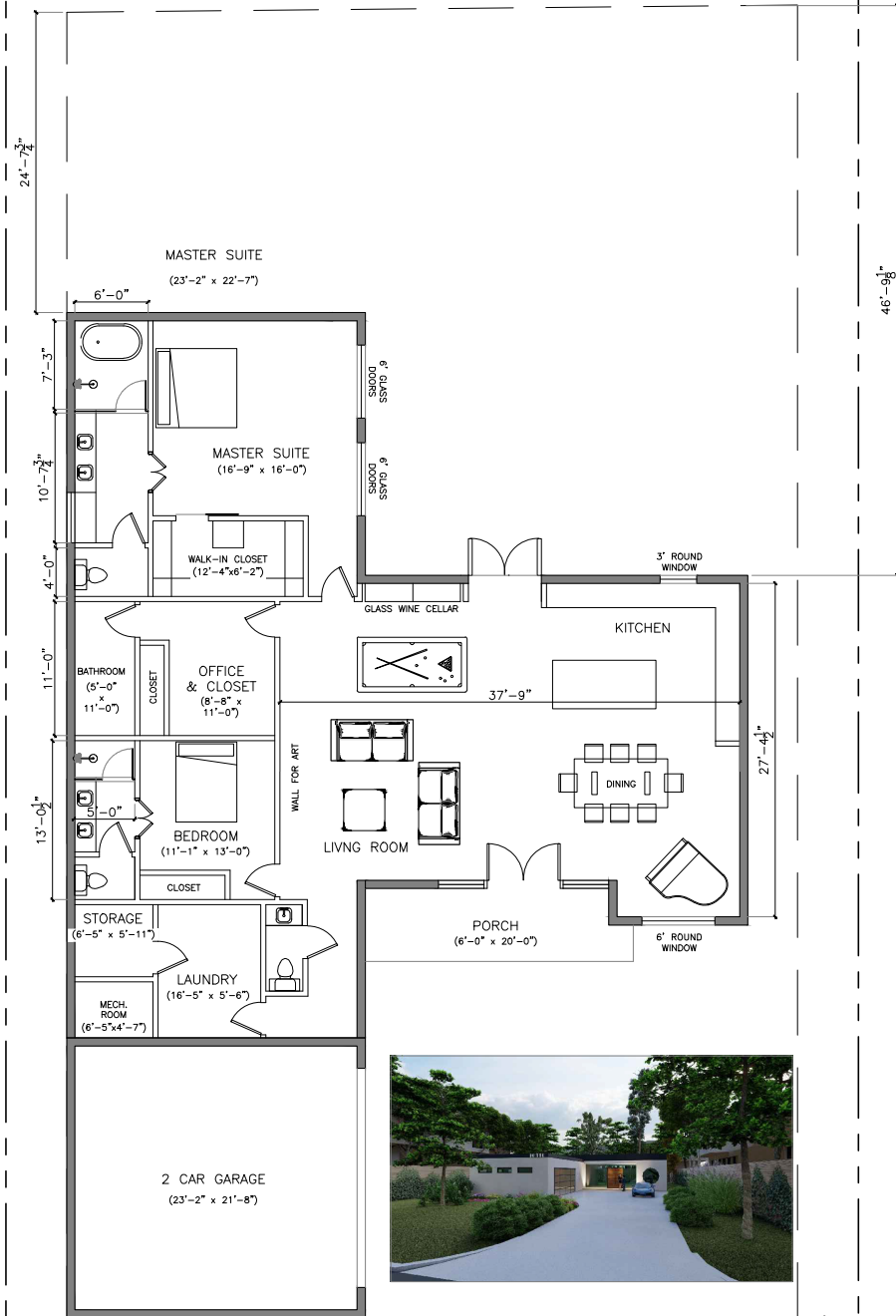


SINGLE FAMILY HOME

LAYOUT

THE CAMERON
LIVING AREA: 2,300 SF
GARAGE: 563 SF
ENTRANCE: 60 SF

BEDROOMS: 2
BATHROOMS: 2.5
GARAGE: 2



MODEL INFORMATION

LIVING AREA	----	2,300 S.F.
ENTRANCE	----	60 S.F.
GARAGE	----	563 S.F.
TOTAL COVERED AREA === 2,923 S.F.		

